

## GENERAL NOTES

THIS DRAWING TO BE READ IN CONJUNCTION WITH ARCHITECT'S DRAWINGS, CONSULTANT ENGINEER'S DRAWINGS AND SPECIFICATIONS & LANDSCAPE ARCHITECT'S DRAWINGS  
REFER TO ARCHITECT'S SITE PLAN PL02 FOR NORTH ORIENTATION.

LEVELS GIVEN ON HOUSE TYPE DRAWINGS ARE GIVEN TO A LOCAL ABSOLUTE ZERO LEVEL. FOR SPECIFIC LEVELS DEPENDING ON INDIVIDUAL UNIT LOCATION, REFER TO ARCHITECT'S CONTEXT SECTIONS AND ENGINEER'S DRAWINGS WHERE LEVELS ARE ALL GIVEN IN RELATION TO LAND SURVEYOR'S BENCHMARK BASED ON MALIN HEAD DATUM LEVEL.

### NOTES ON FINISHES:

- ROOF:** TO BE FINISHED IN SLATE OR CONCRETE ROOF TILES IN SELECTED COLOUR OR SIMILAR APPROVED.
- WALLS:** SELECTED CLAY BRICKWORK WHERE INDICATED OTHERWISE PAINTED SAND / CEMENT RENDER OR SELF COLOURED RENDER. EXPRESSED BANDS AROUND EXTERNAL OPES/ EXPRESSED LINTOLS OVER EXTERNAL OPES WHERE INDICATED TO BE RECONSTITUTED STONE (LIGHT CREAM LIMESTONE OR GRANITE EFFECT) OR RENDER.
- JOINERY:** ALL WINDOWS AND DOORS, FRAMES AND LEAVES, TO BE ALUMINIUM POWDER-COATED TO APPROVED COLOUR OR UPVC. OBSCURE GLAZING WHERE INDICATED TO SENSITIVE WINDOWS.
- RAINWATER GOODS:** GUTTERS, DOWNPIPES, AND FIXINGS TO BE UPVC OR ALUMINIUM POWDER COATED TO SELECTED COLOUR TO MATCH ROOF SLATES.
- SOLAR PANELS:** INDICATIVE SOLAR PANEL POSITION. FINAL SOLAR PANEL POSITION DEPENDS ON HOUSE ORIENTATION. THE SOLAR PANELS SHOWN ARE A PROVISIONAL OPTION TO SATISFY RENEWABLE ENERGY REQUIREMENTS OF BUILDING REGS PART L. SOLAR PANELS MAY BE OMITTED IN FAVOUR OF ALTERNATIVE RENEWABLE ENERGY SOURCE.



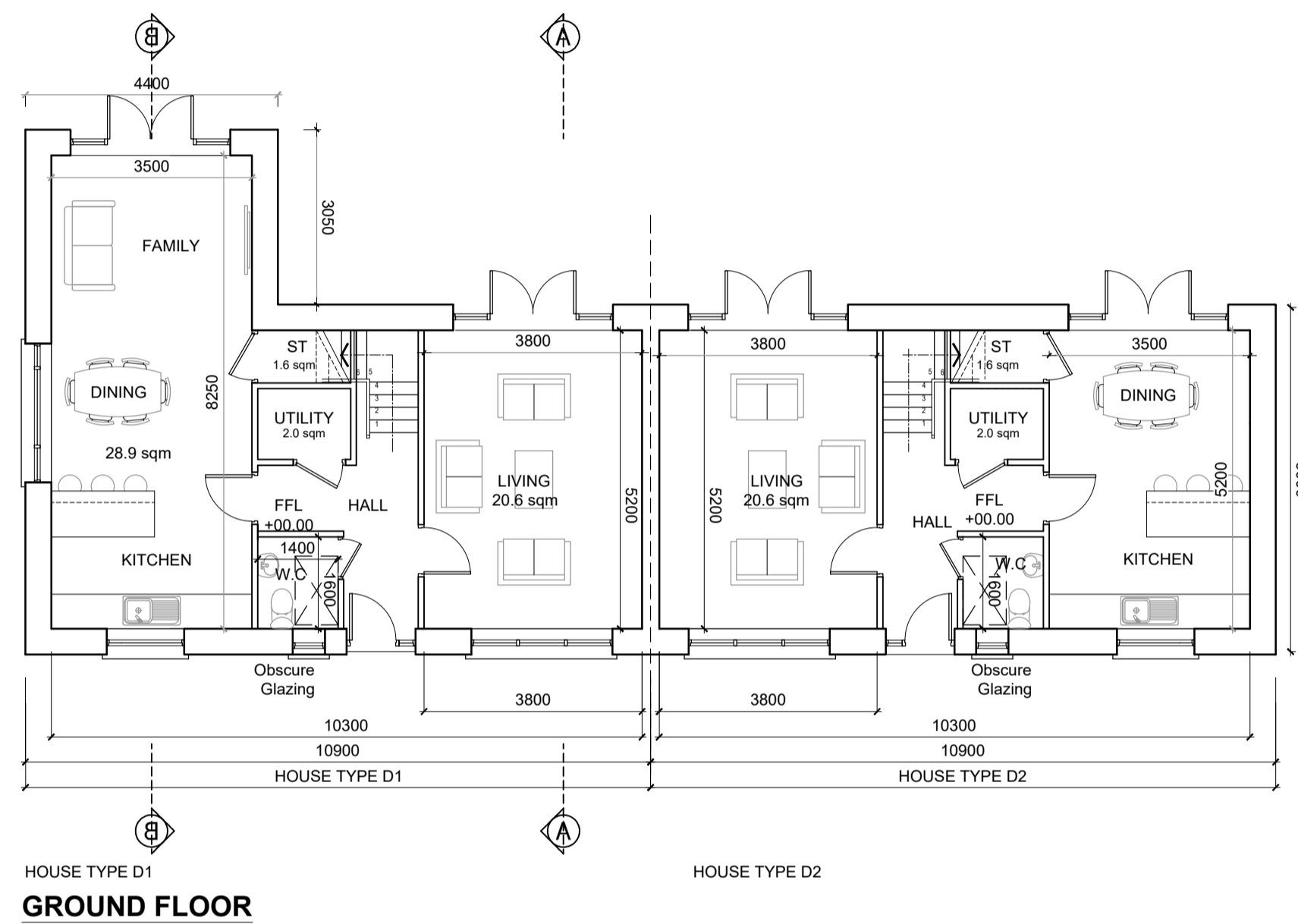
HOUSE TYPE D1  
**FRONT ELEVATION**

HOUSE TYPE D2  
**FRONT ELEVATION**



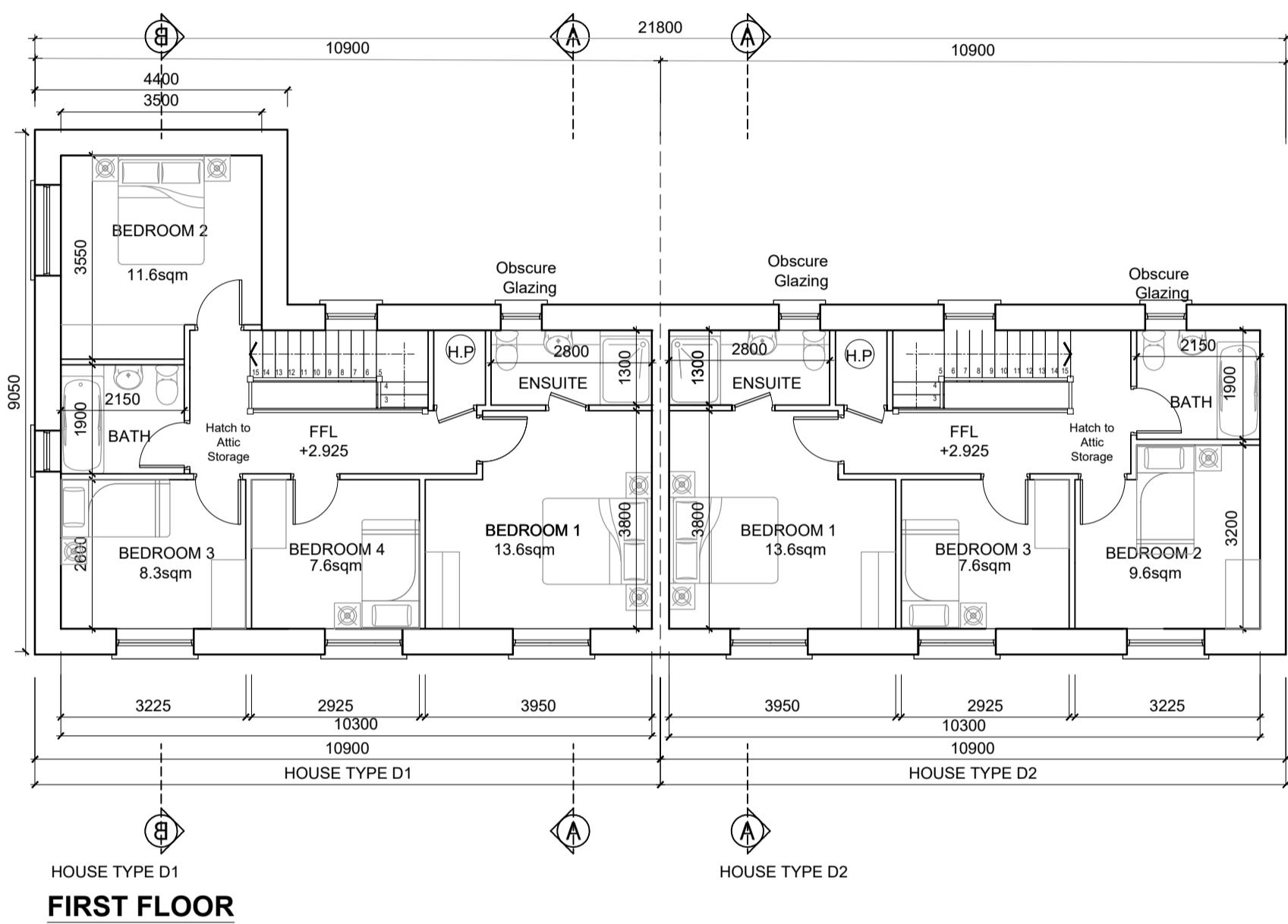
HOUSE TYPE D2  
**REAR ELEVATION**

HOUSE TYPE D1



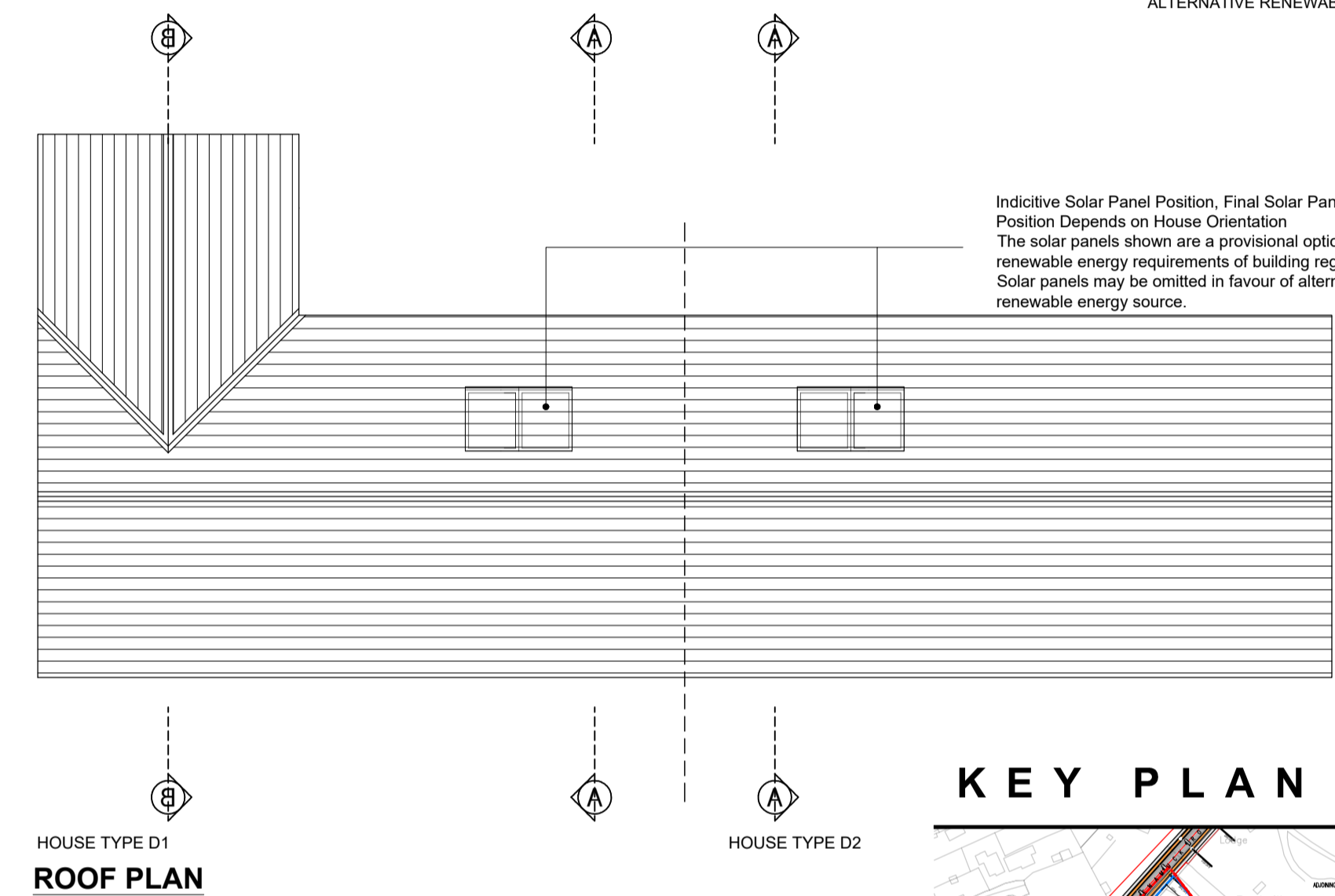
HOUSE TYPE D1  
**GROUND FLOOR**

HOUSE TYPE D2



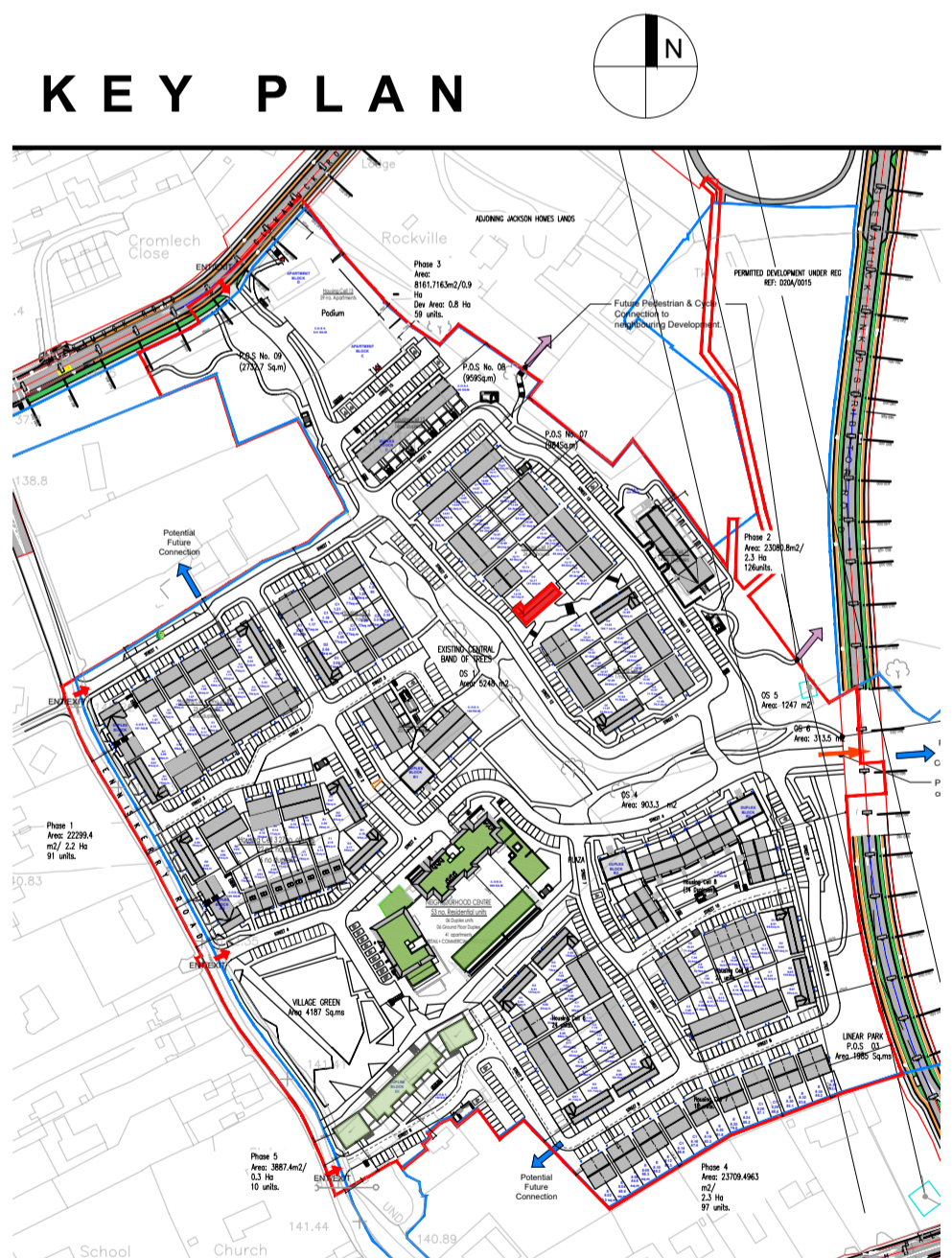
HOUSE TYPE D1  
**FIRST FLOOR**

HOUSE TYPE D2

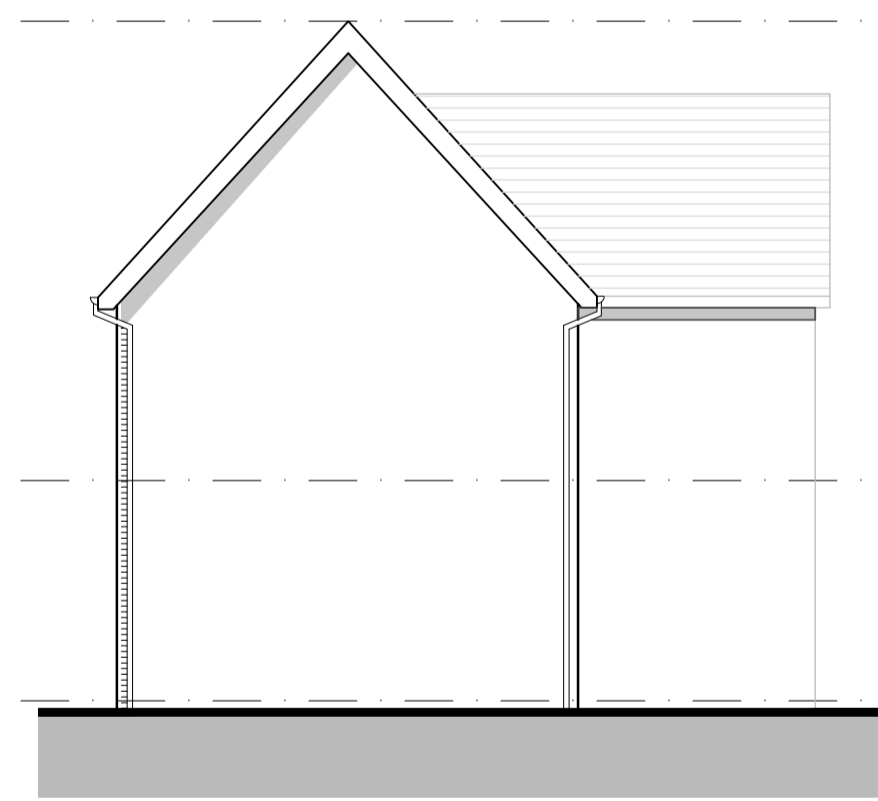


HOUSE TYPE D1  
**ROOF PLAN**

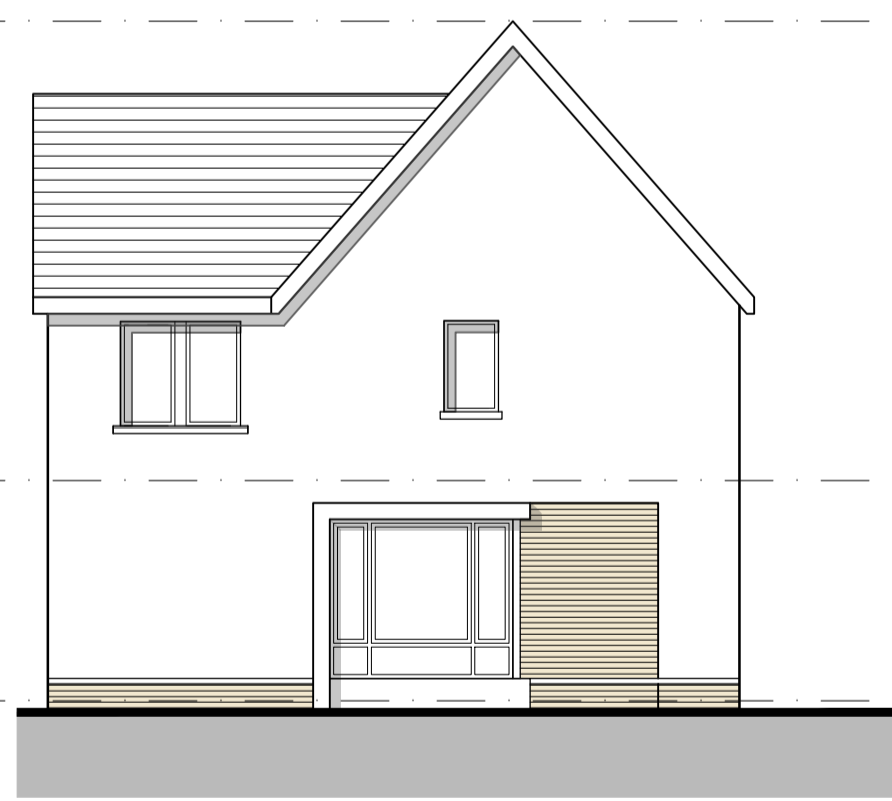
HOUSE TYPE D2



**KEY PLAN**



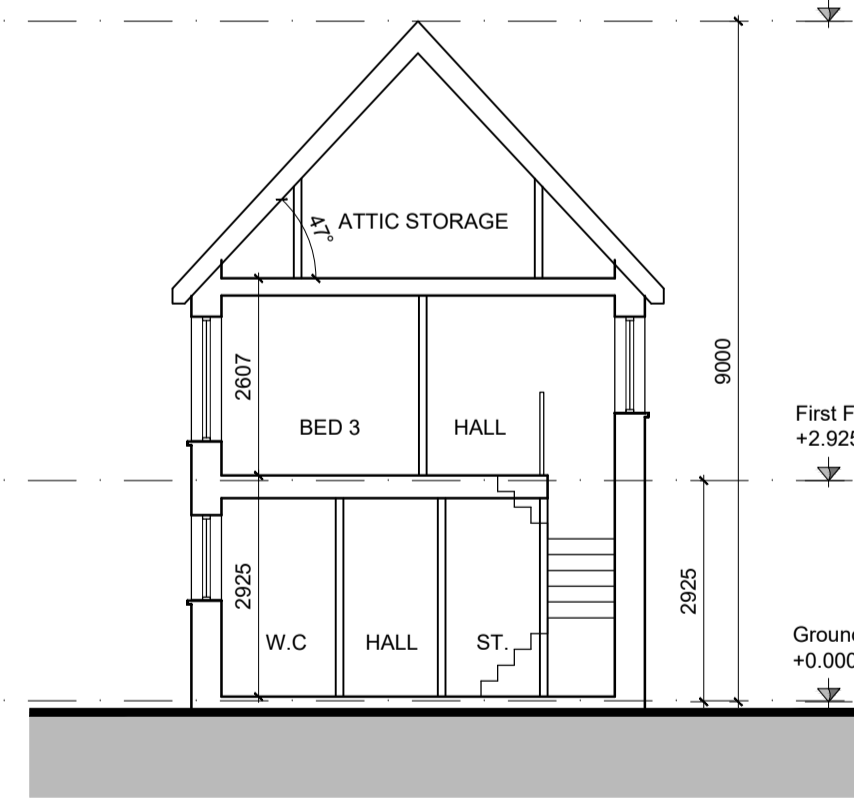
**SIDE ELEVATION**  
House Type D2 - Semi-Detached



**SIDE ELEVATION**  
House Type D1 - Semi-Detached



**SECTION AA**  
House Type D1 - Semi-Detached



**SECTION A-A**  
House Type D2 - Semi-Detached

### NOTES:

DO NOT SCALE FROM DRAWINGS. WORK TO FIGURED DIMENSIONS ONLY. ARCHITECT TO BE NOTIFIED OF ALL DISCREPANCIES.

**SHD STAGE 3**

REVISIONS		
DATE	DESCRIPTION	No.

HOUSE TYPE D1	
2 STOREY - 4 BEDROOMS	
AREA SCHEDULE	
GROUND FLOOR	64.2 m <sup>2</sup> / 691 ft <sup>2</sup>
FIRST FLOOR	64.2 m <sup>2</sup> / 691 ft <sup>2</sup>
<b>TOTAL</b>	<b>124.8 m<sup>2</sup> / 1382 ft<sup>2</sup></b>

HOUSE TYPE D2	
2 STOREY - 3 BEDROOMS	
AREA SCHEDULE	
GROUND FLOOR	53.5 m <sup>2</sup> / 576 ft <sup>2</sup>
FIRST FLOOR	53.5 m <sup>2</sup> / 576 ft <sup>2</sup>
<b>TOTAL</b>	<b>107 m<sup>2</sup> / 1152 ft<sup>2</sup></b>

	PROJECT TITLE:	Kiltinan Village SHD	DATE:	JUN.22	RS
	DRAWING TITLE:	House Type D1 & D2 - Char. Area 3	SCALE:	1:100@A1	REVISION:
		4 & 3 BED 2 STOREY	DWG NO:	21009	PL213
		Albert Place West, Harold's Cross, Dublin 2, Ireland. Tel: 01-4789700 Fax: 01-4789711 E-Mail: <a href="mailto:enq@mccorm.com">enq@mccorm.com</a>			